

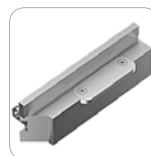
- Practical teflon change thanks to roller system.
- Stable heat distribution and long lasting heater plates distributes the heat homogeneously.



General Features

- Precise double corner welding of profiles between 40°-180°
- On both heads 90° and intermediate angle welding can be made independently.
- All heat and time parameters are set independently.
- Smooth welding of long profiles thanks to rotating support arms.
- Practical adjustment of zero and normal welding thickness.
- Safe working with low pressure top pressing pistons.
- Pressure control system allows the machine run with correct air pressure.

Optional Equipments

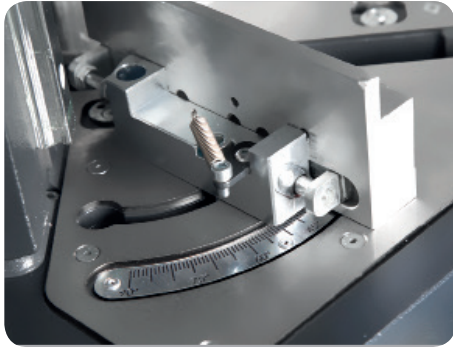


- Welding Moulds

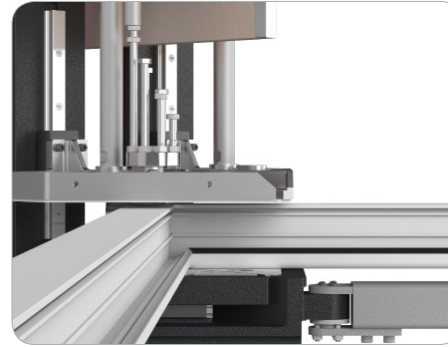


- C 100 Gasket Pressing System

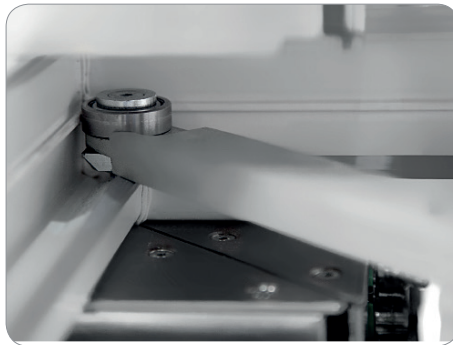
- The product has patented features.



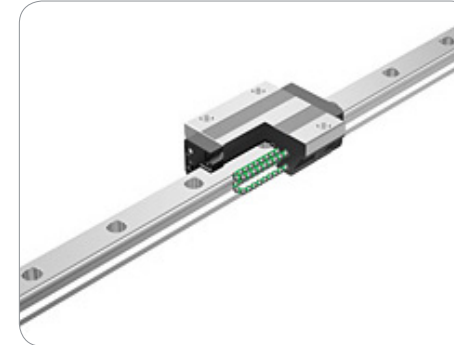
- Saving of time thanks to practical mould change system.
- Stainless steel, long lasting claw plates.



- Piston stroke is adjusted according to profile height through stoppers.
- Time saving thanks to its patented system while profile is clamped as the stopper is adjusted 3-5 mm higher than profile.
- Zero and normal welding chip thickness adjustment thanks to practical adjustment system.



- Smooth gasket surfaces thanks to optional gasket pressing system.



- Continuous precision of welding quality thanks to linear rails.

<p>H: 1700 mm</p>	<p>230 V L1-N-PE 50 / 60 Hz 4 kW</p>	<p>540 kg</p>	<p>A min: 420 mm A max: 3190 mm B max: ∞</p>	<p>6-8 Bar 38 l / minute</p>	<p>a [max.: 150 mm h [max.: 200 mm</p>
-------------------	--	---------------	--	----------------------------------	--

